

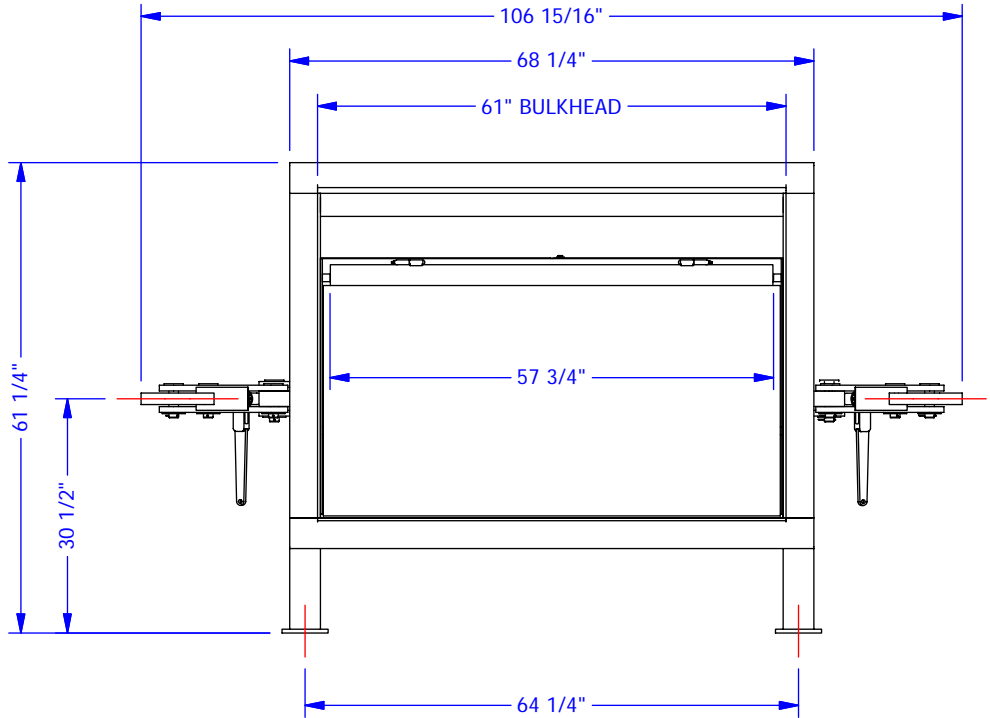
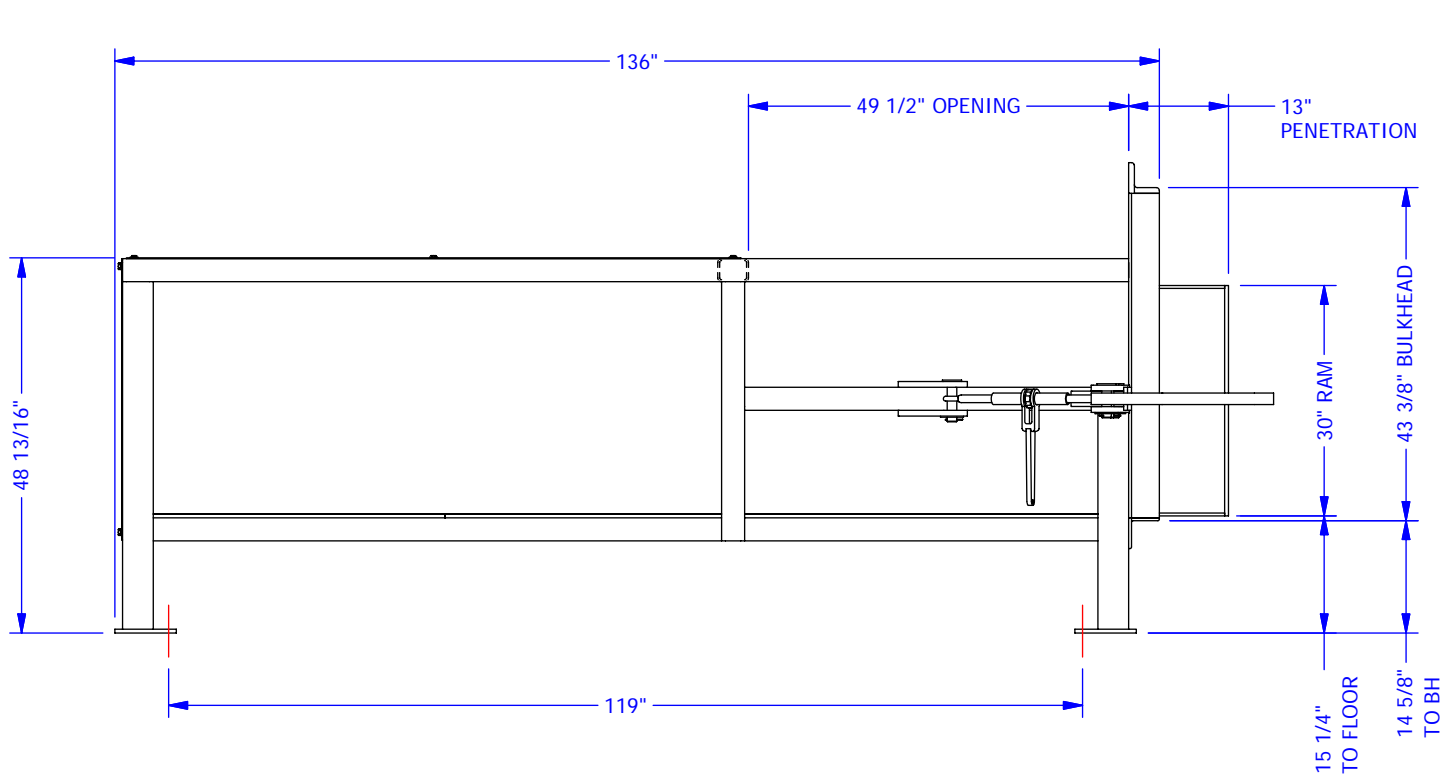
DETAILED SPECIFICATIONS	
MANUFACTURER'S RATING (CU. YDS)	2
NSWMA RATING (CU. YDS)	1.89
CLEAR TOP OPENING - LENGTH (INCHES)	47
- WIDTH (INCHES)	57.75
CHAMBER LENGTH (INCHES)	49.5
RAM PRESSURE (PSI) / RAM FORCE (LBS) - NORM	27.7 / 49,500
- MAX	31.7 / 56,500
SYSTEM HYDRAULIC PRESSURE (PSI) - NORM	1750
SYSTEM HYDRAULIC PRESSURE (PSI) - MAX	2000
RAM STROKE (INCHES)	60
RAM FACE - HEIGHT (INCHES)	30
- WIDTH (INCHES)	59.5
RAM PENETRATION (INCHES)	13
DISCHARGE OPENING - HEIGHT (INCHES)	43.25
- WIDTH (INCHES)	61
BASE UNIT WEIGHT (LBS) (EXCLUDING POWER UNIT, HYDRAULIC FLUID & HOPPER)	5,300

POWER UNIT SPECIFICATIONS			
	STD - 10 HP	15 HP	20 HP
CYCLE TIME (SECONDS)	75	60	49
VOLUME PER HOUR (CU YD.)	91	114	138

CONSTRUCTION SPECS	
PACKER - WALLS	1/4" PLATE
- FLOOR	1/2" PLATE
RAM - FLOOR	3/8" PLATE
- FACE	1/2" PLATE
HYDRAULIC CYLINDER - BORE	6"
- ROD	2 1/2"

DISCONNECT AMPERAGE			
VOLTAGE (VOLTS)	10 HP	15 HP	20 HP
208 - 3 Phase	60	100	100
220 - 3 Phase	60	100	100
240 - 3 Phase	60	100	100
460 - 3 Phase	30	60	60
575 - 3 Phase	30	30	60
600 - 3 Phase	30	30	60

CONTROL SPECIFICATIONS	
STANDARD	OPTIONAL
KEYED ON / OFF SWITCH	REMOTE JOG STATION
EMERGENCY STOP	CYCLE TIMER
CYCLE START	HOPPER INTERLOCK
SINGLE / CONTINUOUS	OIL TANK HEATER
RAM FORWARD	
RAM REVERSE	
FULL LIGHT	
POWER ON LIGHT	



THIS DRAWING IS THE SOLE
PROPERTY OF UNIVERSAL HANDLING
EQUIPMENT COMPANY LIMITED.
REPRODUCTION IN WHOLE OR IN
PART IS STRICTLY PROHIBITED
WITHOUT OUR WRITTEN CONSENT

UNLESS OTHERWISE
SPECIFIED DIMENSIONS
ARE IN INCHES
AND TOLERANCES ARE:

FRAC	.XXX	ANGLE
± 1/32	± .005	± 1/2°

REV	DESCRIPTION	DATE	BY

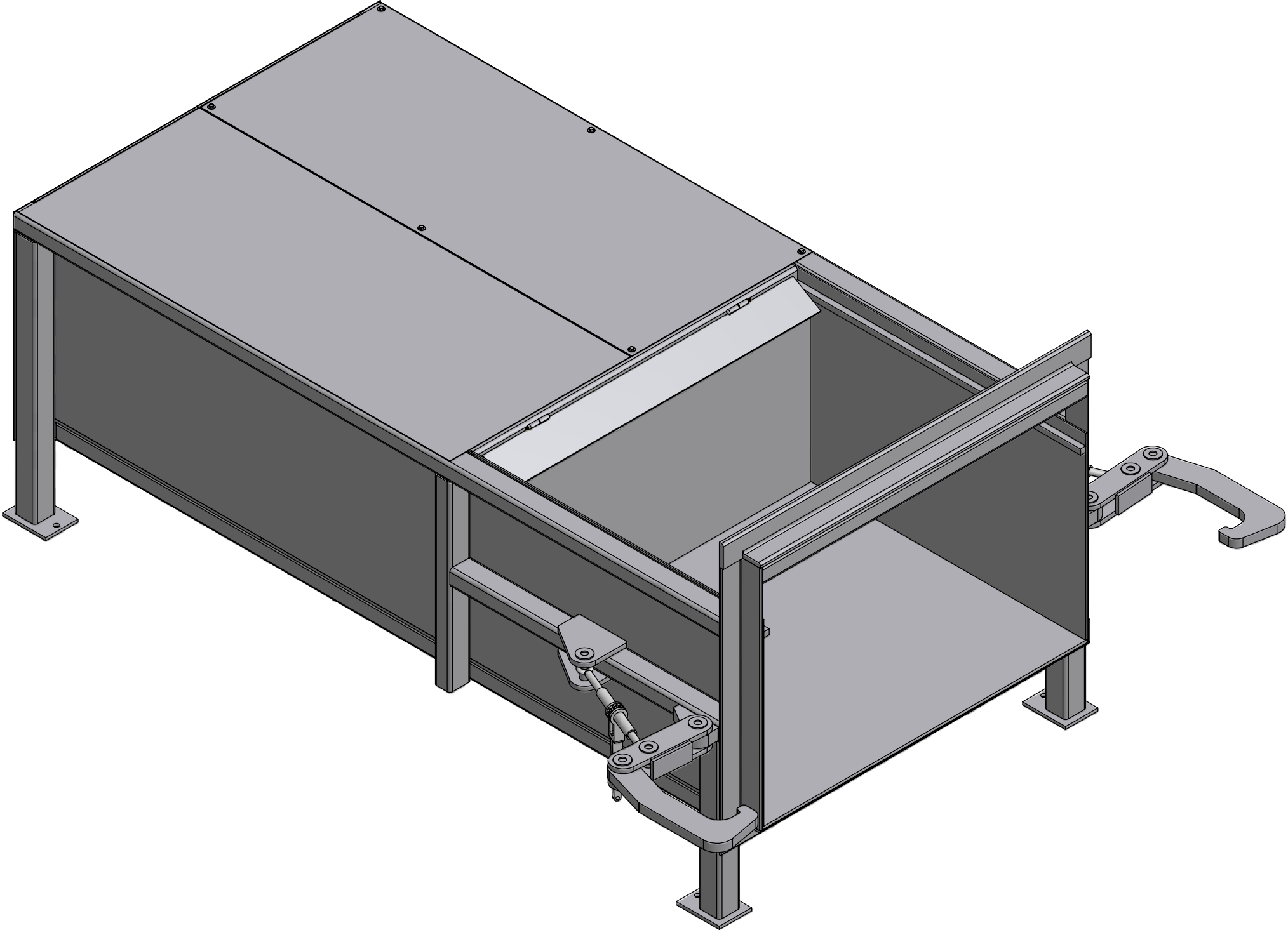


UNIVERSAL HANDLING EQUIPMENT

SPECIFICATIONS FOR UP-2000 COMMERCIAL COMPACTOR

Sheet 1 of 2

DESIGN: GHGA	9/4/2007	DWG. NO. 1406-G003	REV 0
DWG: GHGA	2/16/2010		



THIS DRAWING IS THE SOLE
PROPERTY OF UNIVERSAL HANDLING
EQUIPMENT COMPANY LIMITED.
REPRODUCTION IN WHOLE OR IN
PART IS STRICTLY PROHIBITED
WITHOUT OUR WRITTEN CONSENT

UNLESS OTHERWISE
SPECIFIED DIMENSIONS
ARE IN INCHES
AND TOLERANCES ARE:

FRAC	.XXX	ANGLE
± 1/32	± .005	± 1/2°

REV	DESCRIPTION	DATE	BY



UNIVERSAL HANDLING EQUIPMENT

SPECIFICATIONS FOR UP-2000 COMMERCIAL COMPACTOR				Sheet 2 of 2	
DESIGN:	GHGA	9/4/2007		DWG. NO. 1406-G003	REV 0
DWG:	GHGA	2/16/2010	SCALE: 1/16		